

About the National Center for University Entrance Examinations (the NCUEE)

Outline of the NCUEE

Aim of the NCUEE

The NCUEE aims to improve the university admission selection process and contribute to the advancement of university and high school education, including the latter courses of secondary schools and high school courses of special needs education schools, by working with universities to provide testing services for university applicants.

Plans for the Fifth Medium-Term Goal Period (FY 2021-FY 2025)

(1) Common Test for University Admissions

The Common Test for University Admissions is conducted through collaboration between universities, mainly to assess applicants' basic academic achievements at the high school level and their essential abilities to receive higher education. The NCUEE smoothly and reliably provides services related to the test, including development, administration, scoring, score notifications, and other services appropriate for collective handling.

(2) Research on the Improvement of University Admission Methods

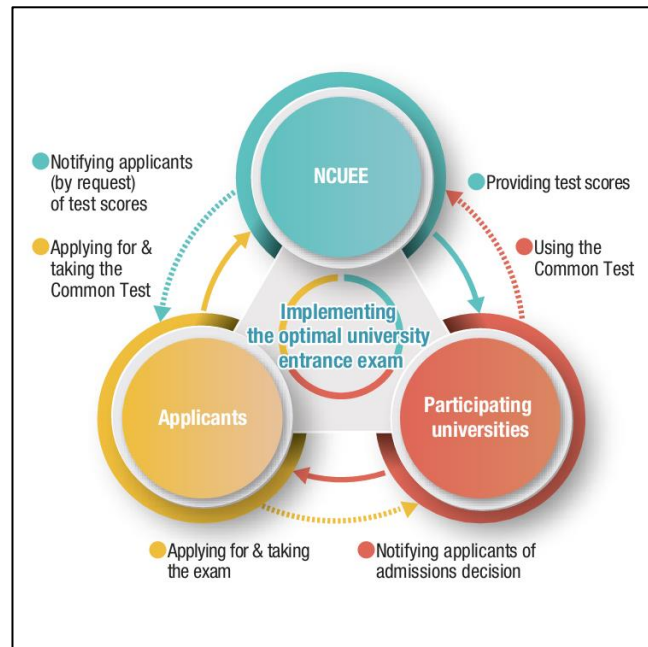
Aiming to become a national center for university admissions, the NCUEE will conduct research on the improvement of university admission methods in collaboration with universities and high schools, while accurately assessing the needs of the times pertaining to the connections between high schools and universities, as well as university admissions.

- Research on the Common Test
- Basic and practical research on university admissions

University Admissions System Combined with the Common Test for University Admissions

The Common Test for University Admissions is conducted through collaboration among the participating universities. The same test is conducted simultaneously at various sites.

National, local public, and private universities use test scores by applying their own criteria and a multifaceted approach to judge the ability, motivation, and aptitude of examinees to receive higher education.



● Roles of the NCUEE

- Test development, printing and delivery of test booklets and so on
- Preparation of an examination guidebook for applicants and a manual for administrators
- Receipt of applications, appointment of test sites, and issue of admission tickets for the examination
- Scoring and aggregation of the test results
- Provision of the test results to the universities
- Notification of individual test scores to the examinees

● Roles of Participating Universities

- Announcing the subject areas and subjects to be adopted from the Common Test for University Admissions and the examinations prepared by the universities themselves
- Providing temporary staff as test developers to the NCUEE
- Providing test sites and examiners on the test day
- Distributing the examination guidebook to applicants
- Maintaining and managing test booklets and so on
- Implementation of the examination, management of the test processing such as collecting and sending test booklets and mark cards
- Requests for test scores

■ Test Fees

For 3 subjects or more: 18,000 yen

For 2 subjects or less: 12,000 yen

800 yen to receive Test Score Notification

(Those who wish to receive a Test Score Notification must pay an additional fee at the time of application)

■ Application Procedures

- Students expecting to graduate from high school can apply through their schools.
- Applicants who have graduated from high school will send their application forms directly to the NCUEE.

■ Examination Sites

- Students expecting to graduate from high school will take the exam at the appointed site within the area where their school is located.
- Applicants who have graduated from high school will take the exam at the appointed site within their residential area.

Test Development for the Common Test for University Admissions

Develop the test to assess the abilities that the examinees have acquired from their high school education, including their knowledge, skills, and abilities to think, judge and express themselves.

The test is developed to assess the quality of the examinees' knowledge and depth of understanding, as well as their performance using their knowledge, skills, and abilities to think, judge and express themselves in order to solve problems. These abilities are expected to be developed through the "proactive, interactive and authentic learning" practices described in the national curriculum standards. Universities use the Common Test for University Admissions while applying their own criteria in a multifaceted approach.

Examples of how universities use the Common Test for University Admissions (the "Test")

- Use a comprehensive range of subject areas and subjects set for the Test, in order to assess applicants' basic academic achievements from a broad perspective.
- Use the Test in combination with school reports in the primary screening and conduct an interview test in the secondary screening.
- When the school recommendation-based selection system is adopted, the Japanese language and foreign languages within the Test are used, and interview tests are conducted by the university.
- Administers tests for mathematics and foreign languages using the Test as well as science tests developed independently by the university.
- Use the Test solely for preliminary eligibility screening, with specific requirement scores announced in advance. Scores of the Test are not used for admission decisions, which are made based solely on the results of tests administered independently by the university.

Subject Areas and Subjects of the Common Test

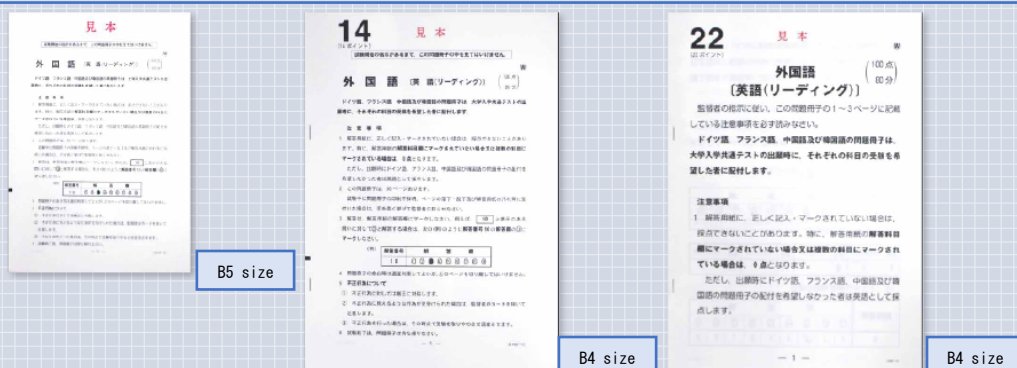
The Common Test consists mainly of multiple-choice objective questions.

Subject Area (Group)	Subject
Japanese Language	Japanese Language
Geography and History	Geography, Advanced Geography
	Modern and Contemporary History, Advanced Japanese History
	Modern and Contemporary History, Advanced World History
	Geography/Modern and Contemporary History/Public
Civics	Public, Ethics
	Public, Politics and Economy
	Geography/Modern and Contemporary History/Public (repeated)
Mathematics (1)	Mathematics I, Mathematics A
	Mathematics I
Mathematics (2)	Mathematics II, Mathematics B, Mathematics C
Science	Basic Physics / Basic Chemistry / Basic Biology/Basic Earth Science
	Advanced Physics
	Advanced Chemistry
	Advanced Biology
	Advanced Earth Science
Foreign Languages	English
	German
	French
	Chinese
	Korean
Informatics	Informatics I

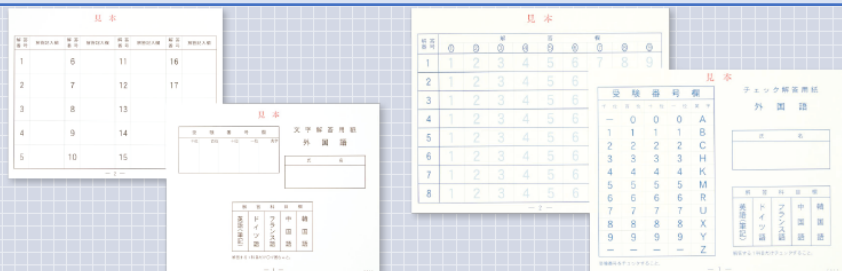
Special Points of Reasonable Accommodation

The NCUEE provides reasonable accommodation for applicants who request it for the Common Test for University Admissions because of illness, injury, or disabilities. However, their application must be reviewed. Upon conducting the test, in view of the “Act for Eliminating Discrimination against Persons with Disabilities,” the NCUEE provides reasonable accommodation at a level that is appropriate to the type and degree of the disability involved, and strives to respond flexibly according to the degree of difficulty for each applicant.

Common Test question booklets in enlarged fonts
(from the left: regular booklet, 14-point font booklet, 22-point font booklet)



Common Test answer sheets for answering in text (left) and for answering by checking (right)



Number of Applicants and Examinees, and Percentage of Examinees

- Number of applicants (persons) : 491,914
- Number of examinees (persons) : 457,608
- Percentage of examinees : 93.03%