

About the National Center for University Entrance Examinations (the NCUEE)



Outline of the NCUEE

Aim of the NCUEE

The NCUEE aims to improve the university admission selection process and contribute to the advancement of university and high school education, including the latter courses of secondary schools and high school courses of special needs education schools, by working with universities to provide testing services for university applicants.

Plans for the Fifth Medium-Term Goal Period (FY 2021-FY 2025)

(1) Common Test for University Admissions

The Common Test for University Admissions is conducted through collaboration between universities, mainly to assess applicants' basic academic achievements at the high school level and their essential abilities to receive higher education. The NCUEE smoothly and reliably provides services related to the test, including development, administration, scoring, score notifications, and other services appropriate for collective handling.

(2) Research on the Improvement of University Admission Methods

Aiming to become a national center for university admissions, the NCUEE will conduct research on the improvement of university admission methods in collaboration with universities and high schools, while accurately assessing the needs of the times pertaining to the connections between high schools and universities, as well as university admissions.

- Research on the Common Test
- Basic and practical research on university admissions

University Admissions System Combined with the Common Test for University Admissions

The Common Test for University Admissions is conducted through collaboration among the participating universities. The same test is conducted simultaneously at various sites.

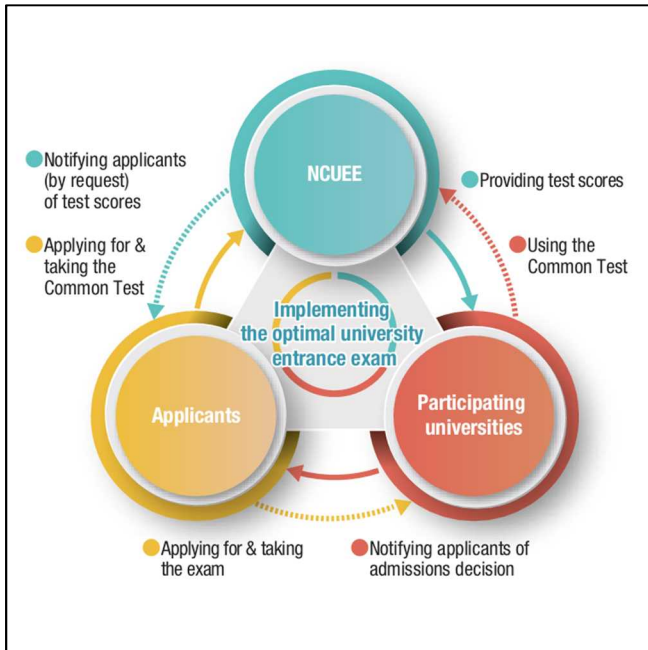
National, local public, and private universities use test scores by applying their own criteria and a multifaceted approach to judge the ability, motivation, and aptitude of examinees to receive higher education.

● Roles of the NCUEE

- Test development, printing and delivery of test booklets and so on
- Preparation of an examination guidebook for applicants and a manual for administrators
- Receipt of applications, appointment of test sites, and issue of admission tickets for the examination
- Scoring and aggregation of the test results
- Provision of the test results to the universities
- Notification of individual test scores to the examinees

● Roles of Participating Universities

- Announcing the subject areas and subjects to be adopted from the Common Test for University Admissions and the examinations prepared by the universities themselves
- Providing temporary staff as test developers to the NCUEE
- Providing test sites and examiners on the test day
- Distributing the examination guidebook to applicants
- Maintaining and managing test booklets and so on
- Implementation of the examination, management of the test processing such as collecting and sending test booklets and mark cards, and requests for test scores



■ Test Fees

For 3 subjects or more: 18,000 yen
 For 2 subjects or less: 12,000 yen
 800 yen to receive Test Score Notification

(Those who wish to receive a Test Score Notification must pay an additional fee at the time of application)

■ Application Procedures

- Students expecting to graduate from high school can apply through their schools.
- Applicants who have graduated from high school will send their application forms directly to the NCUEE.

■ Examination Sites

- Students expecting to graduate from high school will take the exam at the appointed site within the area where their school is located.
- Applicants who have graduated from high school will take the exam at the appointed site within their residential area.

Roles of the Common Test for University Admissions

The Common Test for University Admissions has started from FY2021 for national, public, and private universities, replacing the National Center Test, which had been conducted from FY1990 to FY2020.

The National Center Test was the successor to the Joint First-Stage Achievement Test, which had been conducted from FY1979 to FY1989 for the entrance examinations of public and local public universities.

1.

Develop the test to assess examinees' essential abilities for higher education, including their knowledge, skills, and abilities to think, judge and express themselves

Based on the qualities and abilities identified as areas to develop in the national curriculum standards announced in 2009, the test has been developed to assess how well examinees understand the knowledge as well as to have them use their abilities to think, judge, and express themselves to solve problems.

2.

Promote individuality and diversification of the admissions systems by universities, through integration of the Common Test for University Admissions and respective university examinations

Using the Common Test for University Admissions, an increasing number of universities now conduct essay tests and interviews, select students based on recommendations from high schools, and conduct special entrance examinations for students who have received education outside of Japan and for adults. Thus, the Common Test for University Admissions contributes to the diversification and individuality of universities in terms of applicant selection methods.

3.

Promote admission systems reform for universities, junior colleges, etc.

The number of universities and junior colleges using the test amounted to 864 for the 2023 school year (as of May 1, 2023). The test is highly rated by these institutions.

4.

Appropriate usage at each university by an “a la carte” method

The Common Test for University Admissions employs an “a la carte” optional method, allowing universities to specify the subject areas and subjects to be used for their admission procedures.

Subject Areas and Subjects of the Common Test

The Common Test consists mainly of multiple-choice objective questions.

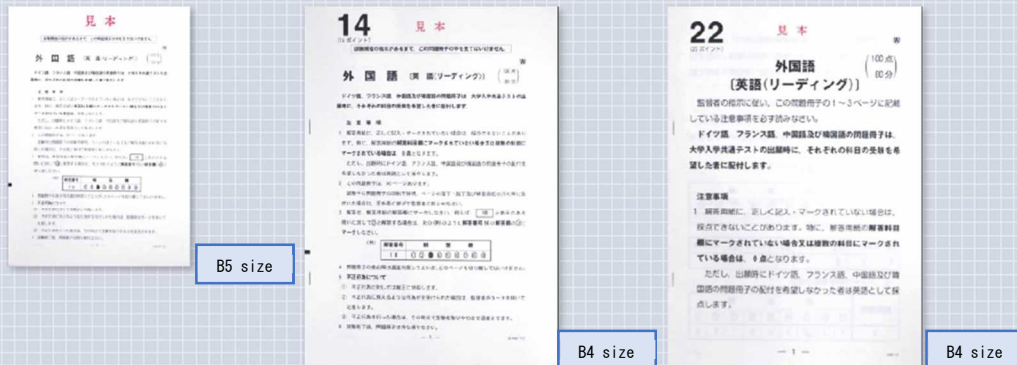
	Subject Area (Group) / Subject	Selection of Subjects
Day 1	Geography and History World History A World History B Japanese History A Japanese History B Geography A Geography B Civics Contemporary Society Ethics Politics and Economics Ethics, Politics, and Economics	Select up to two from the ten subjects to answer. Examinees cannot select two subjects containing the same name. Examinees must declare the number of subjects to answer when submitting their applications.
	Japanese Language Japanese Language	
	Foreign Languages English German* French* Chinese* Korean*	Select one from the five subjects to answer. Those who want to receive a question booklet for the subject indicated with an asterisk (*) must request it when submitting their applications.

	Subject Area (Group) / Subject	Selection of Subjects
Day 2	Science (1) Basic Physics Basic Chemistry Basic Biology Basic Earth Science	Select two from the four subjects to answer. Examinees must declare the subjects they selected to answer when submitting their applications.
	Mathematics (1) Mathematics I Mathematics I and A	Select one from the two subjects to answer.
	Mathematics (2) Mathematics II Mathematics II and B Bookkeeping and Accounting* Basics in Information Processing*	Select one from the four subjects to answer. Those who want to receive a question booklet for the subject indicated with an asterisk (*) must request it when submitting their applications.
	Science (2) Advanced Physics Advanced Chemistry Advanced Biology Advanced Earth Science	Select up to two from the four subjects to answer. Examinees must declare the subjects they selected to answer when submitting their applications.

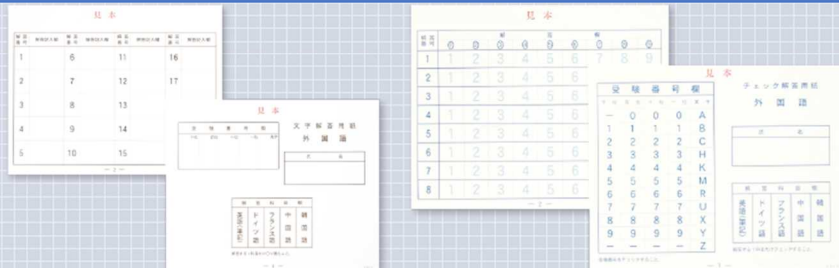
Special Points of Reasonable Accommodation

The NCUEE provides reasonable accommodation for applicants who request it for the Common Test for University Admissions because of illness, injury, or disabilities. However, their application must be reviewed. Upon conducting the test, in view of the “Act for Eliminating Discrimination against Persons with Disabilities,” the NCUEE provides reasonable accommodation at a level that is appropriate to the type and degree of the disability involved, and strives to respond flexibly according to the degree of difficulty for each applicant.

Common Test question booklets in enlarged fonts
(from the left: regular booklet, 14-point font booklet, 22-point font booklet)



Common Test answer sheets for answering in text (left) and for answering by checking (right)



- Number of Applicants and Examinees, and Percentage of Examinees
 - ・ Number of applicants (persons) : 512,581 (530,367)
 - ・ Number of examinees (persons) : 474,051 (488,383)
 - ・ Percentage of examinees : 92.48% (92.08%)