

## 設問別正答率

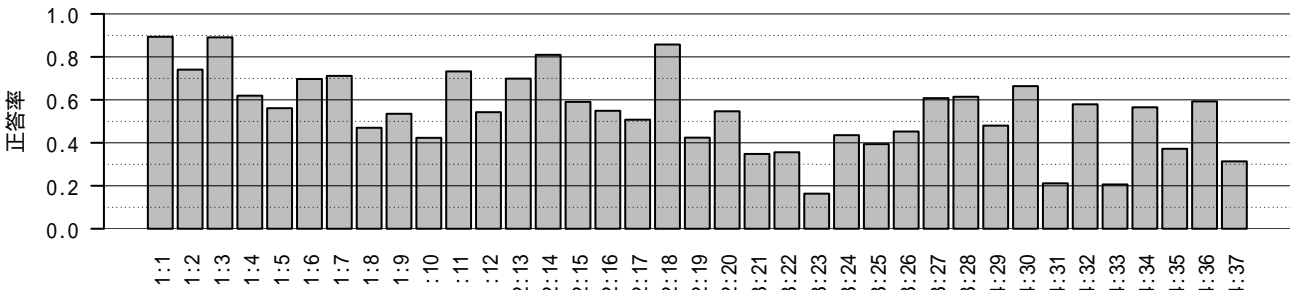
(令和5年度大学入学共通テスト本試験 全教科・科目)

\*右縦軸に正答率，横軸に大問及び解答番号を示す。

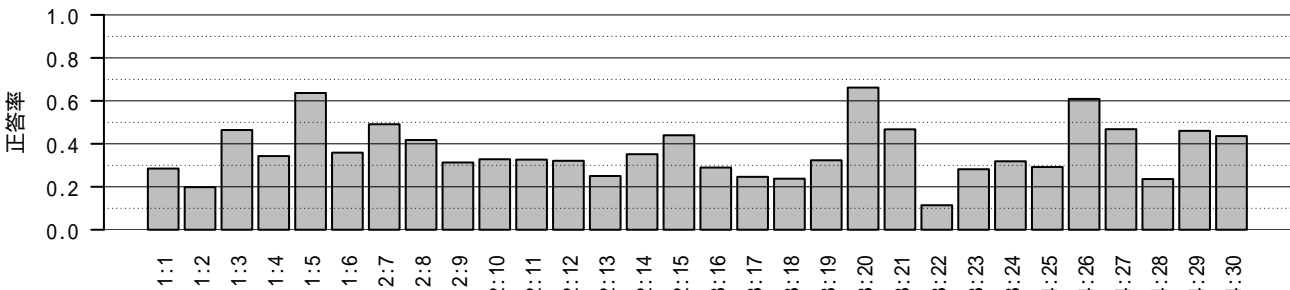
(例 国語「1：1」は大問1の解答番号1)

以下，全教科・科目を掲載する。

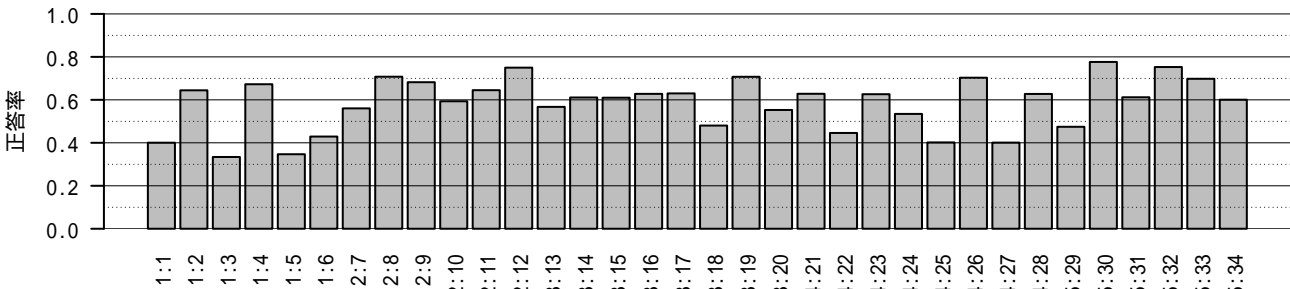
### 国語



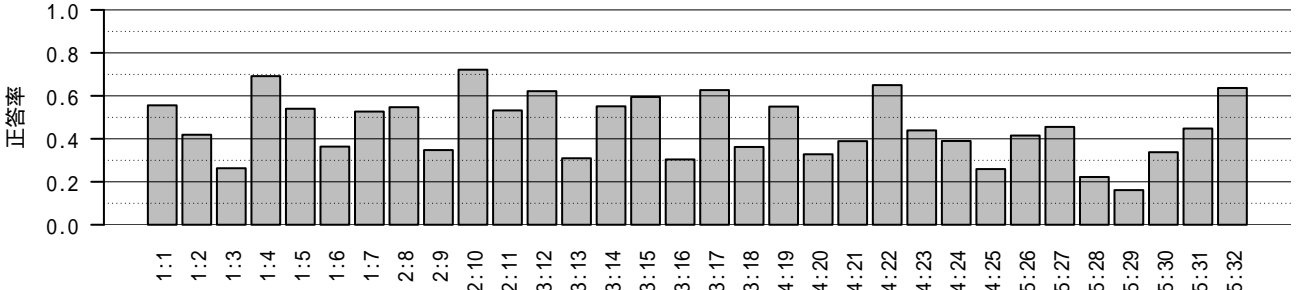
### 世界史A



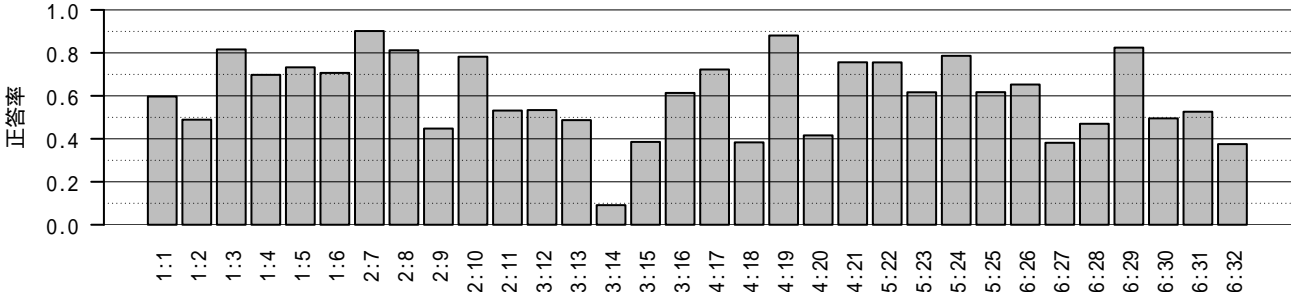
### 世界史B



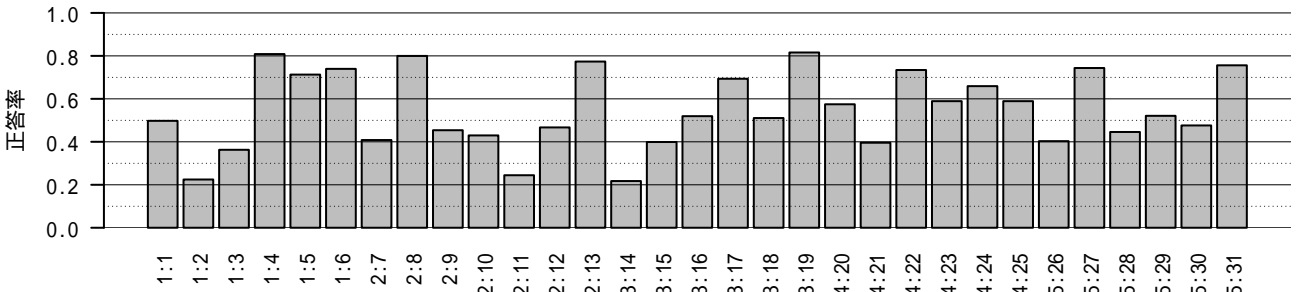
### 日本史A



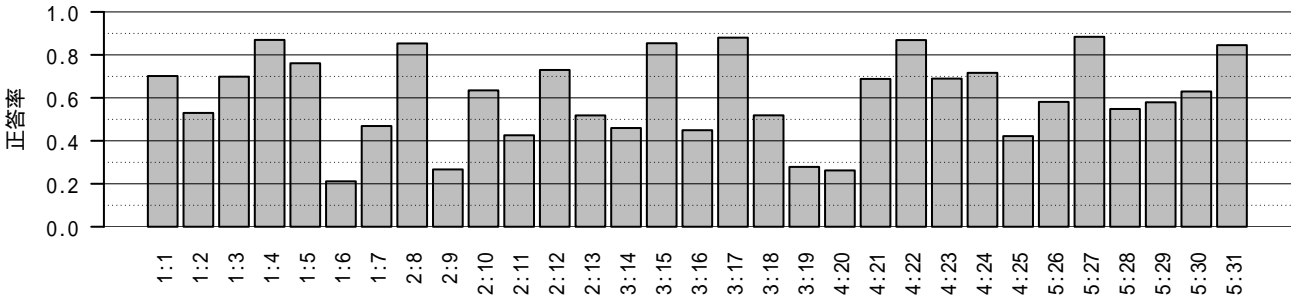
### 日本史B



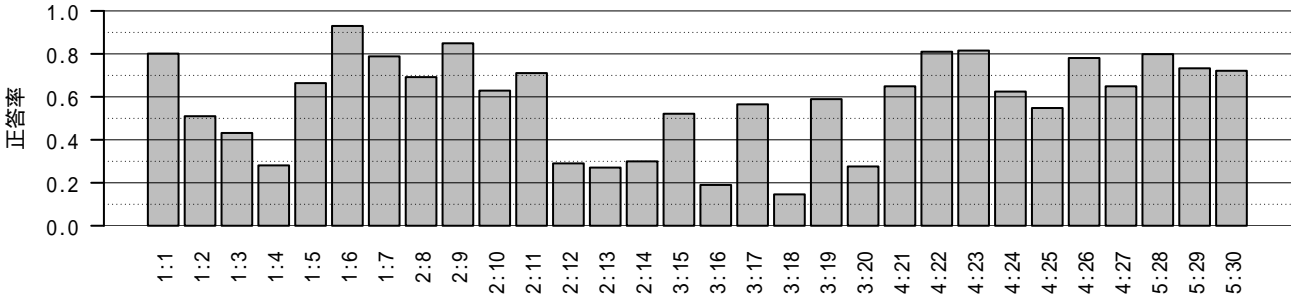
### 地理A



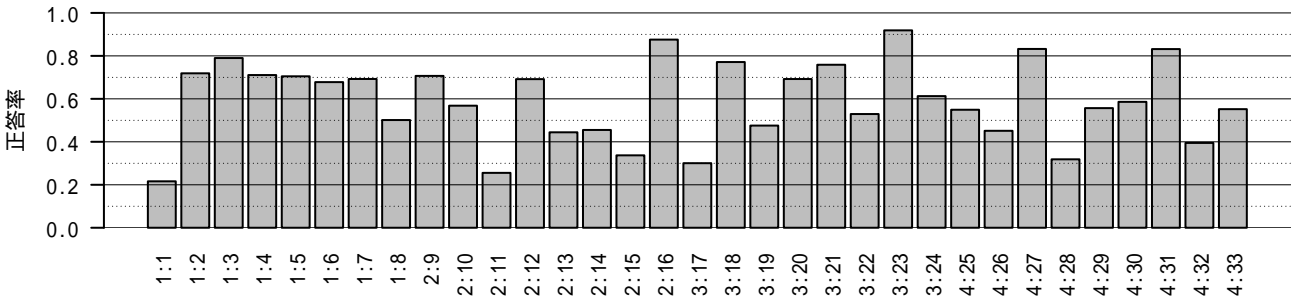
### 地理B



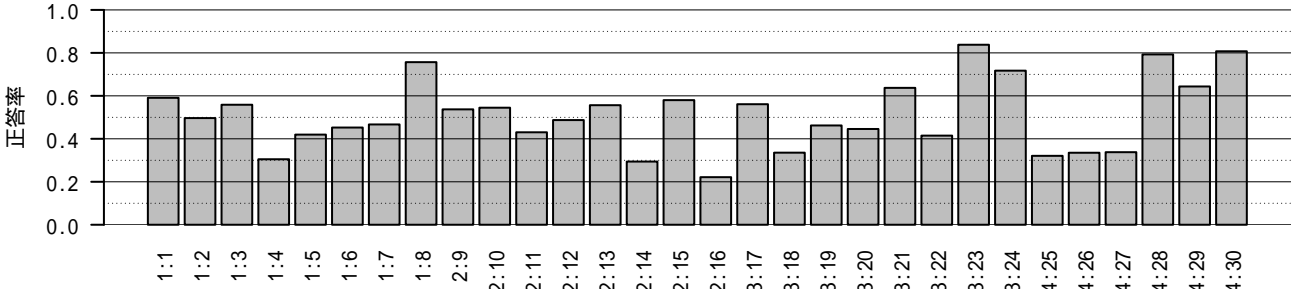
### 现代社会



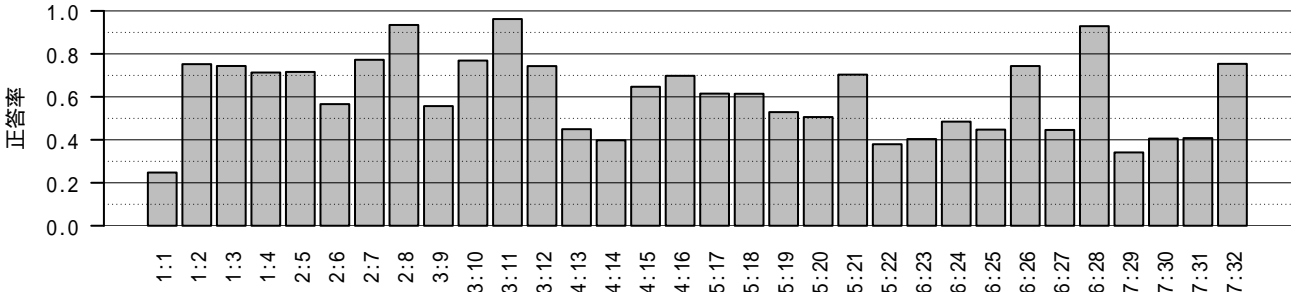
### 倫理



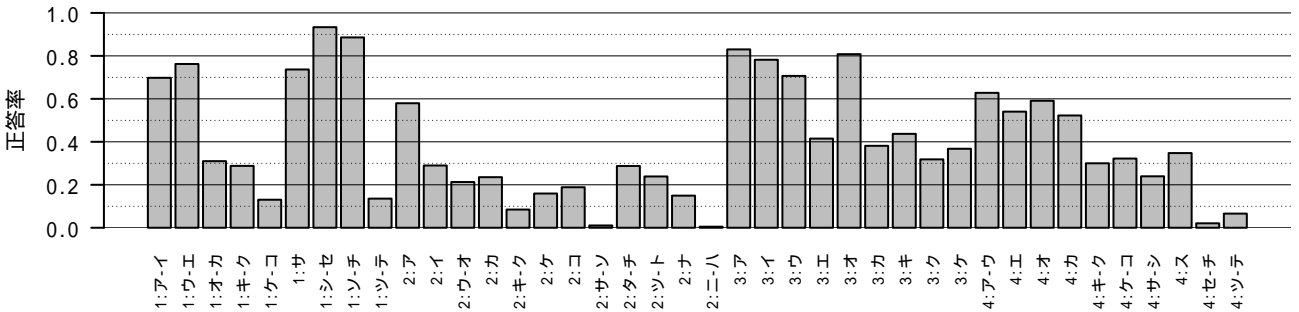
### 政治・経済



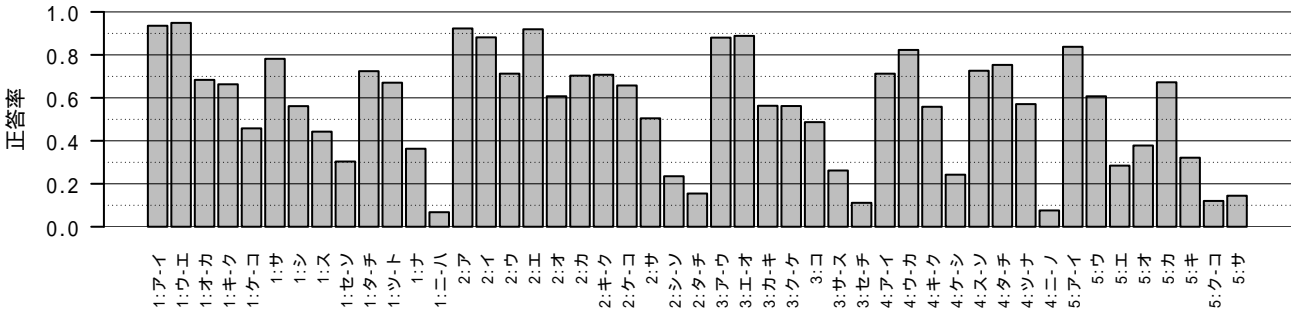
### 倫理, 政治・経済



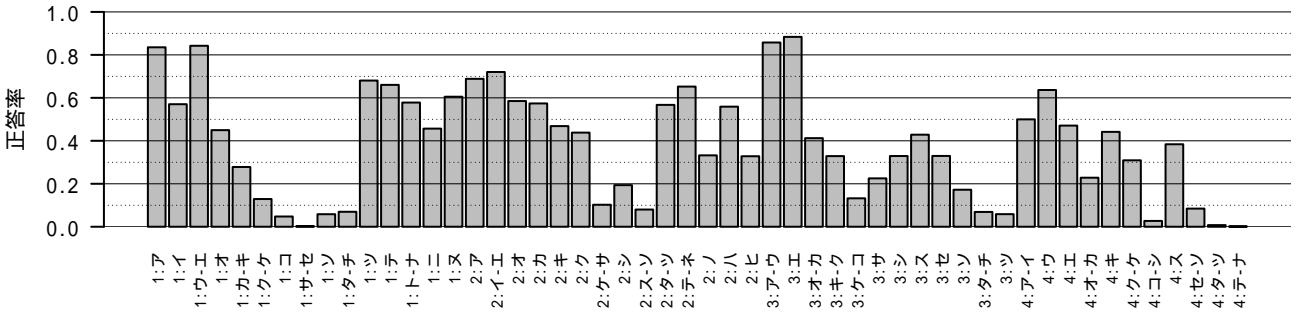
### 数学I



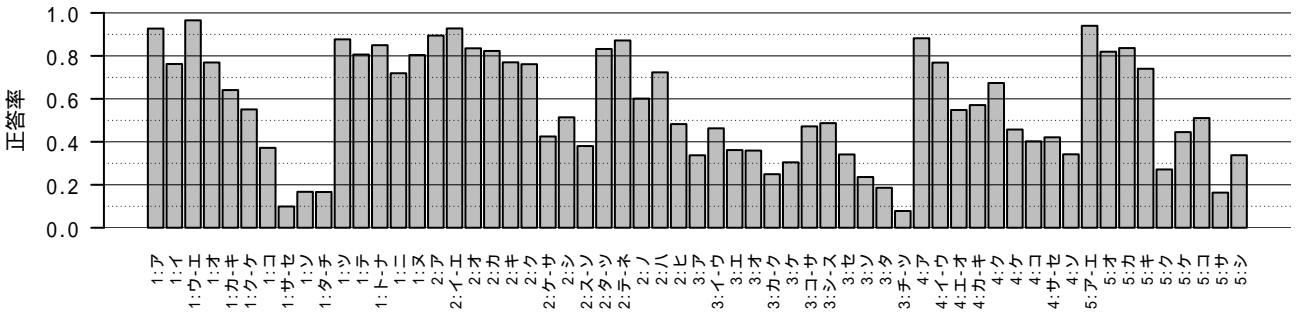
## 数学I・数学A



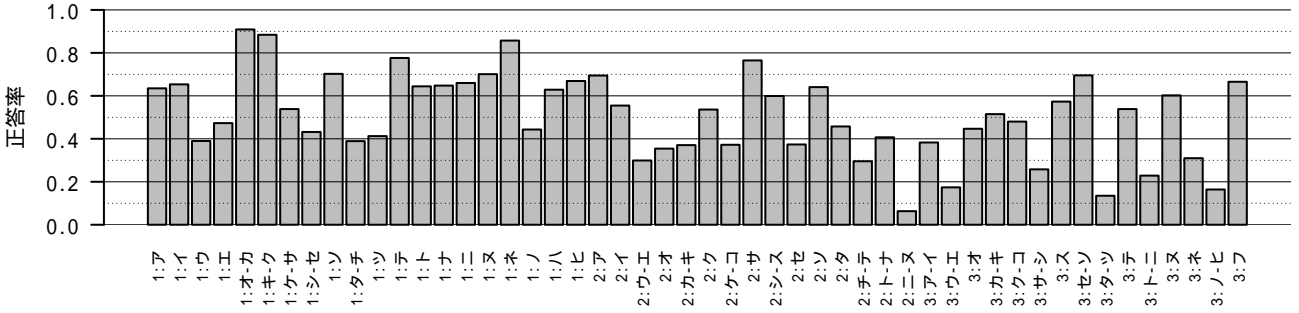
## 数学II



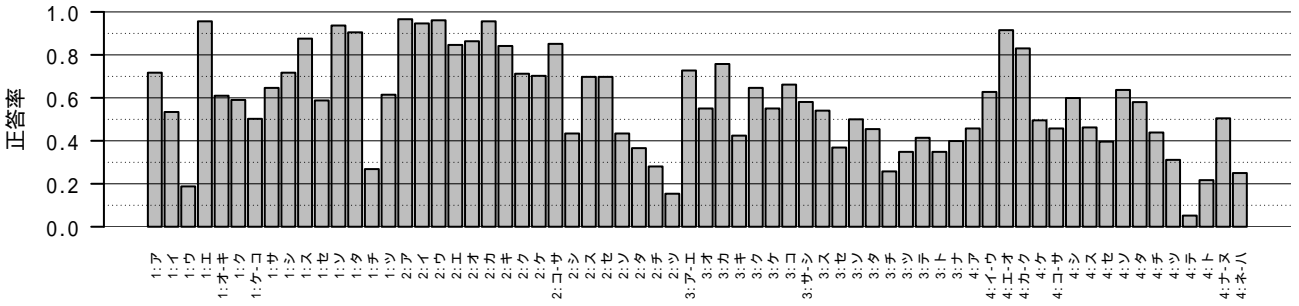
## 数学II・数学B



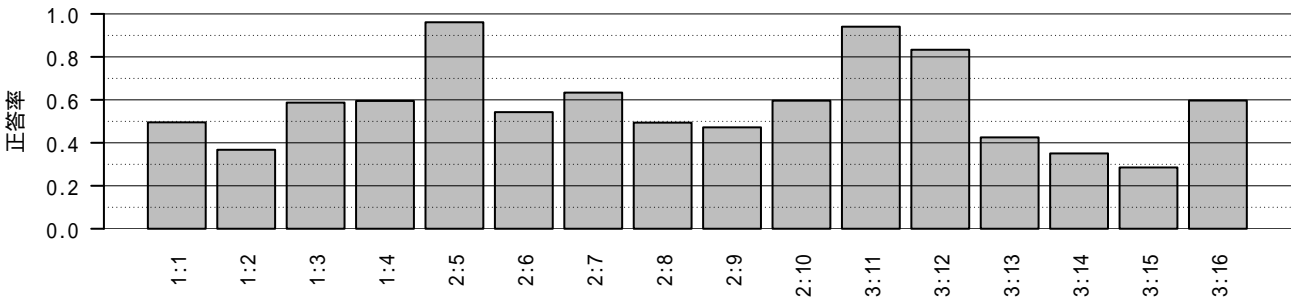
## 簿記・会計



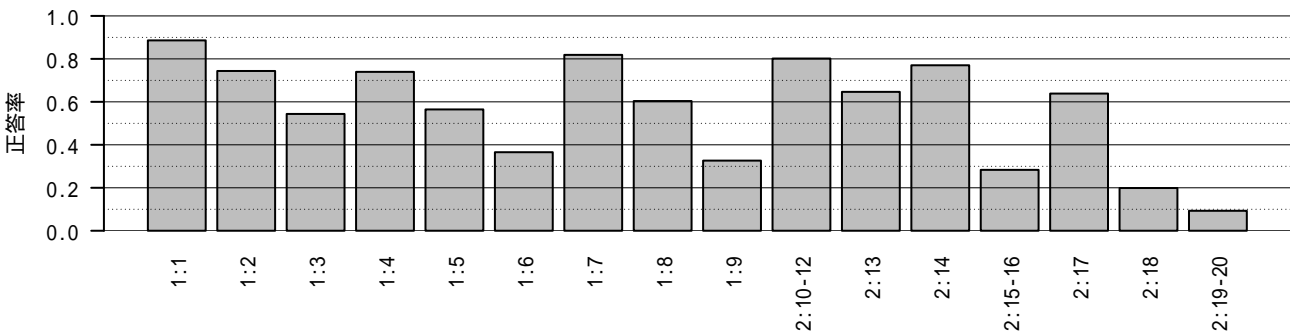
## 情報関係基礎



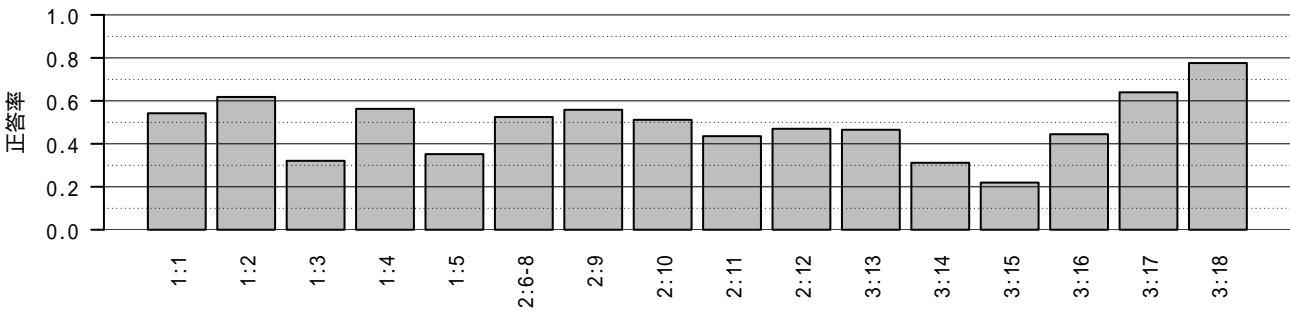
## 物理基礎



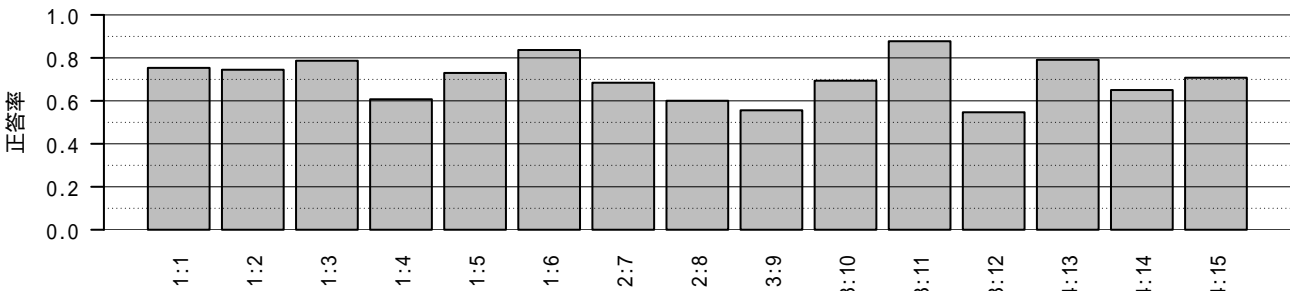
### 化学基础



### 生物基础

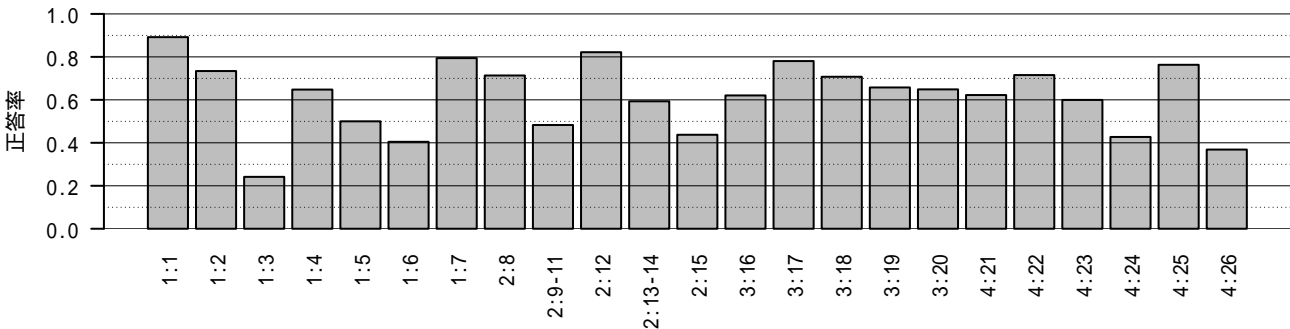


### 地学基础

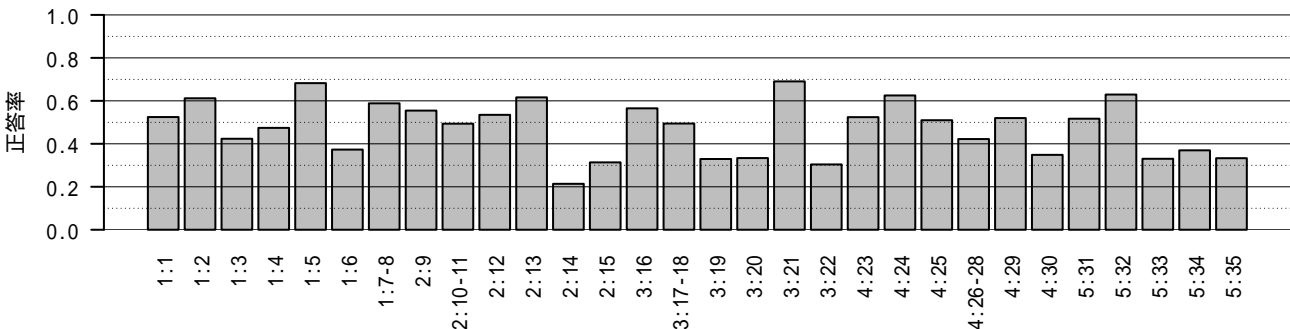




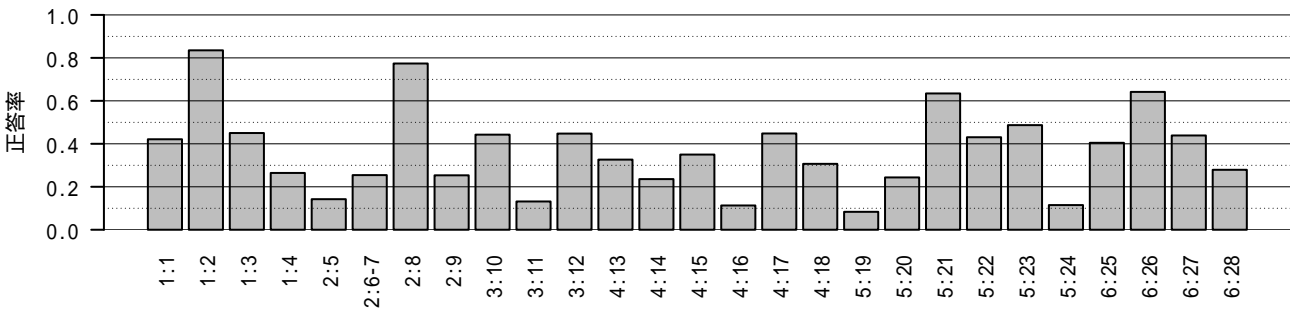
### 物理



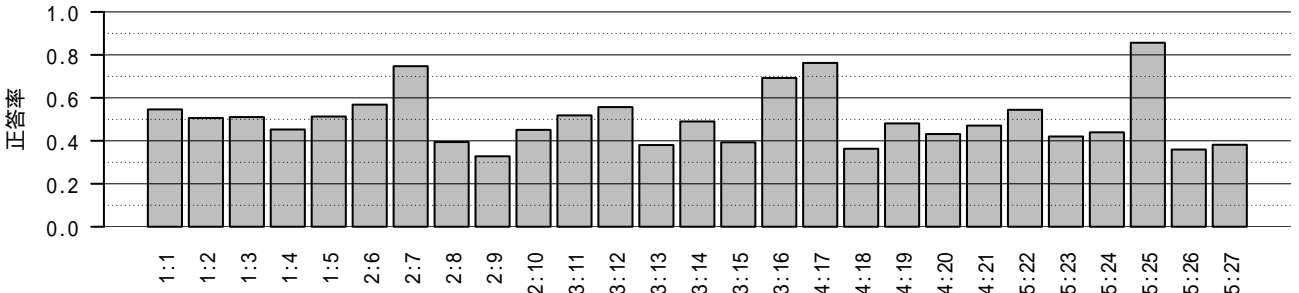
### 化学



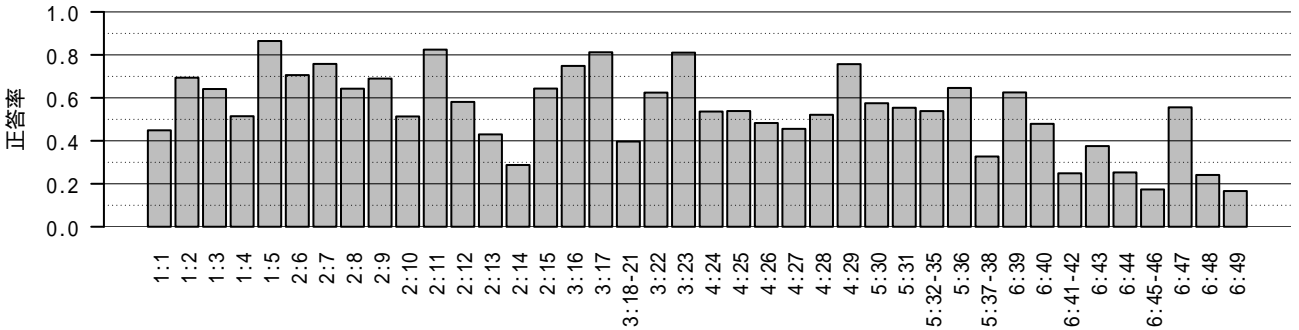
### 生物



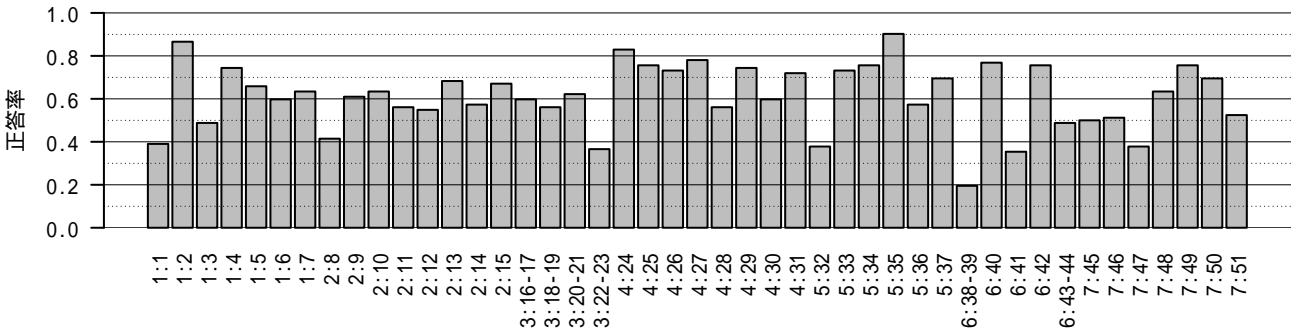
### 地学



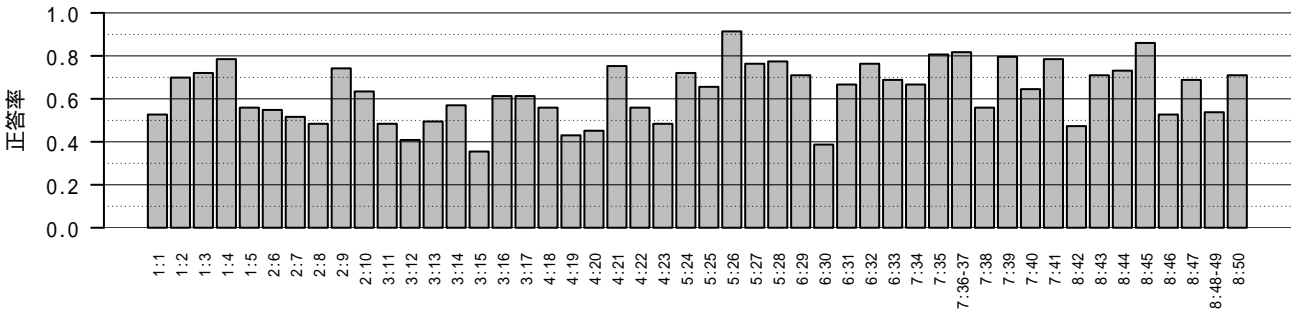
### 英語(リーディング)



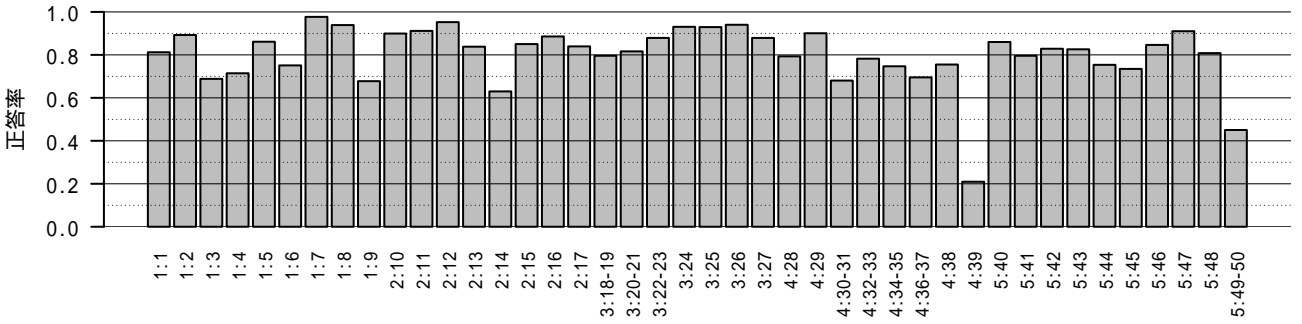
### ドイツ語



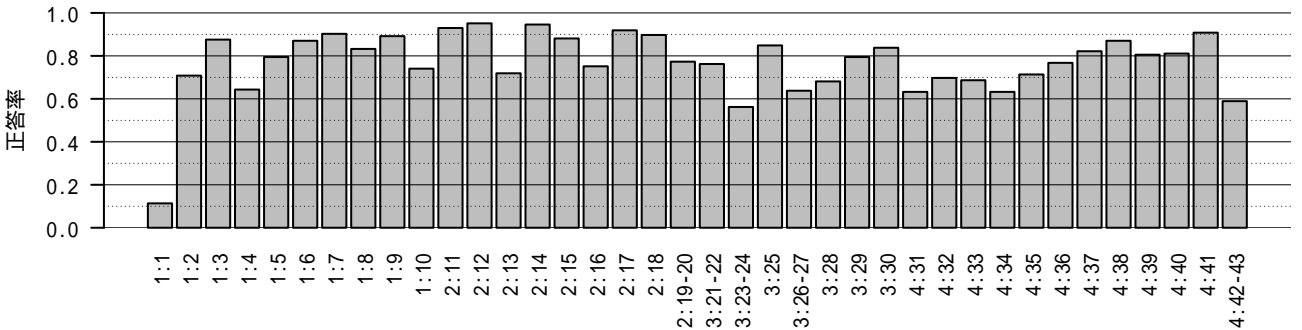
## フランス語



## 中国語



## 韓国語



# 英語(リスニング)

